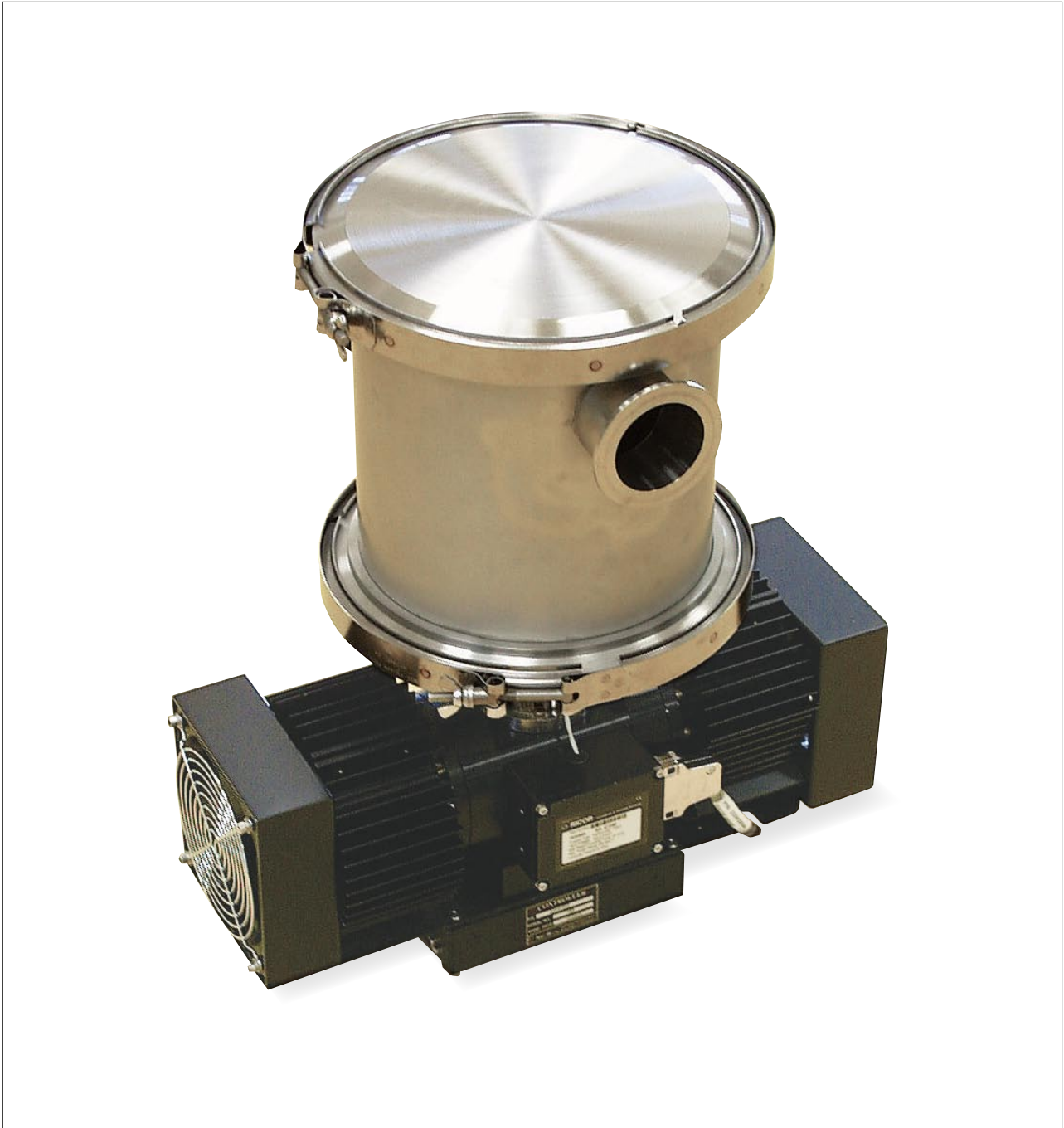




RICOR
Cryogenic & Vacuum Systems

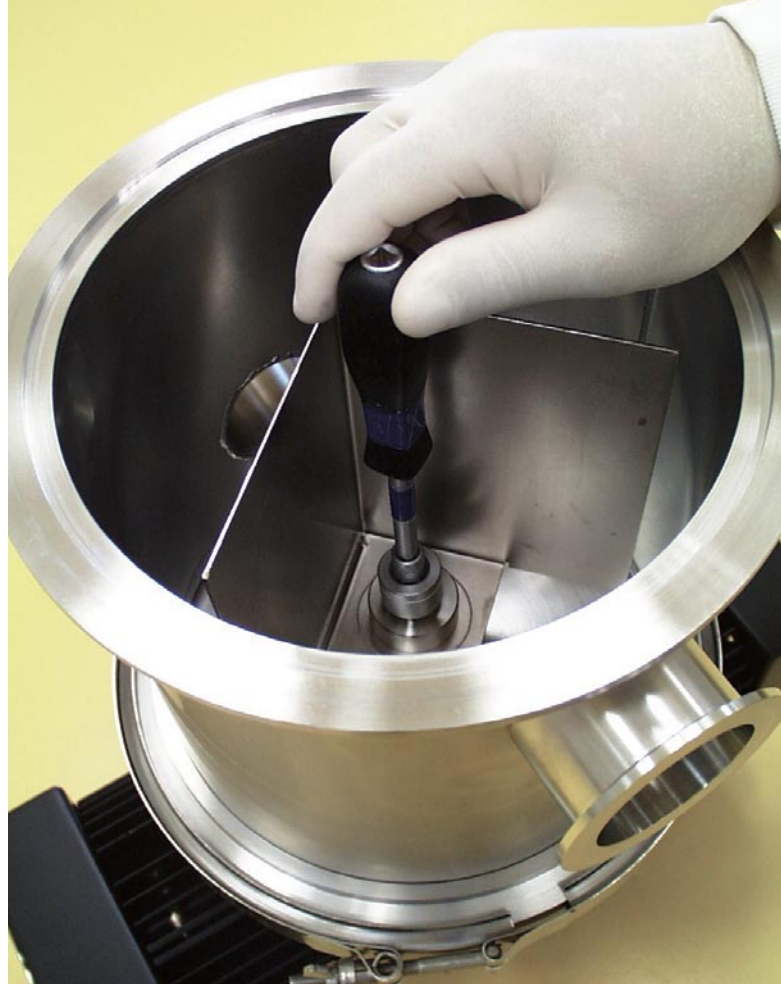
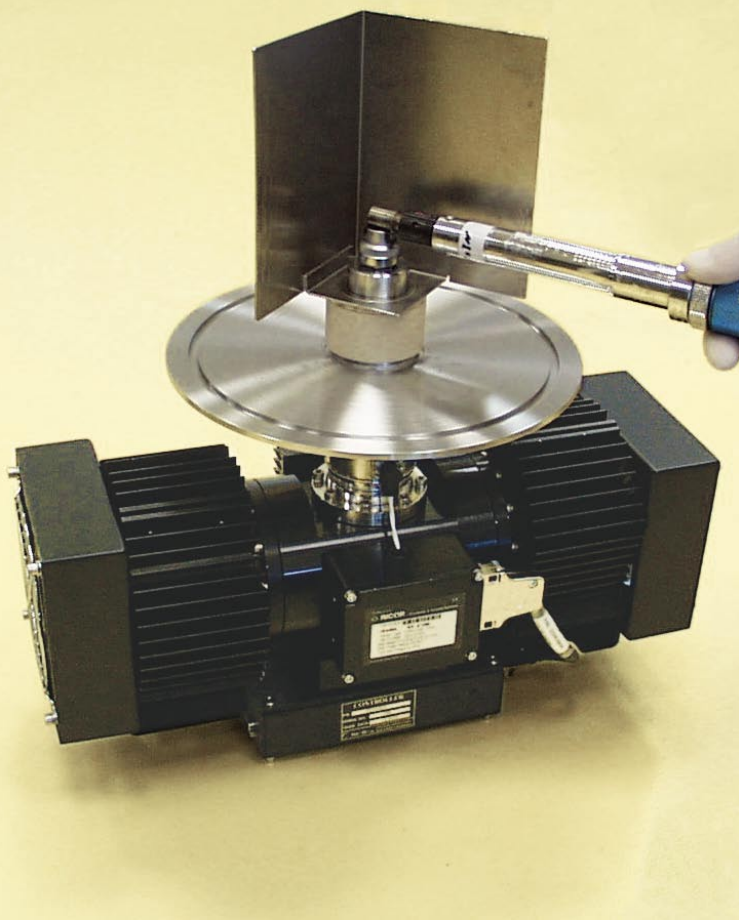


K535 Parylene Cryo Trap



There are ways to do it better...

A new solution for a Parylene Coating Cryo Trap



Extend tool production and life span, minimize tool down time. Get the maximum out of your tool:

Parylene CVD coating material builds up and may harm your primary pump. In order to protect the pump and get a cleaner process, a Cryo array utilizes down stream.

The typical Cryo surface is bulky expensive and requires frequent and tedious maintenance.

Ricor provides a new solution!

A Cryo Trap for Parylene coating utilizes Stirling cryo cooler technology.

Features and Benefits

1. Self contained - no remote peripheral components such as compressor or gas lines.
2. The pump is specially designed for high maintenance Parylene coating.
 - a. Complete cryo array cleanup requires removing one vacuum clamp;
 - b. A full pump maintenance requires removing only two clamps
 - c. A sacrificial cryo array enables disassembly of the cryo array by unscrewing a single bolt and cleaning the array off line while the tool is up in production.
3. Cryo array base temp is user defined and on the fly! While in other technologies temp is pre determined by the gas mixture. This allows a true selective pumping mechanism.
4. The pump cooling agent is commercial He – a non hazardous gas.
5. Driven by a High efficiency Stirling engine-. Only 120W of input power during steady state operation.
6. Thanks to a special proprietary pump design, the cooler is completely isolated from the cryo trap hence no corrosion and material deterioration due to contact with process reactive gasses.
7. **Designed manufactured and sold by Ricor**, with 30 years Stirling experience and an installed base of tens of thousands of coolers.



ISRAEL Ricor
 En Harod Ihud, 18960, Israel
 Phone. +972-4-6530800
 Fax. +972-4-6532424
 E-mail: microstar@ricor.com

USA Cryo-Solutions Corp.
 Phone. +1-954-802-7477
 Fax. +1-954-337-2693
 E-mail: nirg@cryo-solutions.net